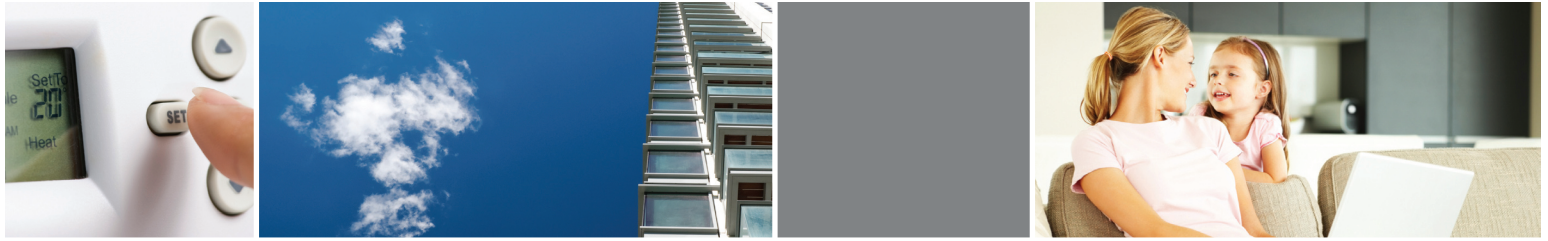




SMART SUITE

METERING PROGRAM



FREQUENTLY ASKED QUESTIONS

WHAT IS SMART SUITE METERING?

Smart Suite Metering is a method used to measure the electricity used by each suite owner (also called “Smart Suite Meters”) in a master-metered or bulk-metered high-rise condominium building.

WHY ARE YOU PROVIDING SMART SUITE METERING?

In order to support the Ontario government’s objective to develop a culture of energy conservation, Enersource Hydro Mississauga is offering to install smart meters in each condominium unit to record when and how much electricity is used. Once Time-of-Use (TOU) rates take effect, Smart Meters will bill electricity usage through a three-tiered pricing structure for different periods of the day referred to as off-peak, mid-peak and on-peak.

WHY USE SMART METERS AND TIME-OF-USE (TOU) RATES?

Experience shows that homeowners prefer to be in control of their electricity use, allowing them to manage their energy bills. For additional information about Smart Meters, TOU rates and how to better manage electricity costs, visit www.smartmetersontario.ca.

WHAT IS THE BENEFIT OF SMART SUITE METERING?

Smart Suite Metering enables energy conservation because residents pay only for the electricity that they actually use as opposed to an allocated share of the total electricity bill for the entire building.

HOW IS MY BUILDING CURRENTLY BEING BILLED FOR ELECTRICITY?

Multi-tenant buildings and garden-style housing are metered for electricity in one of two ways by utilities and retailers.

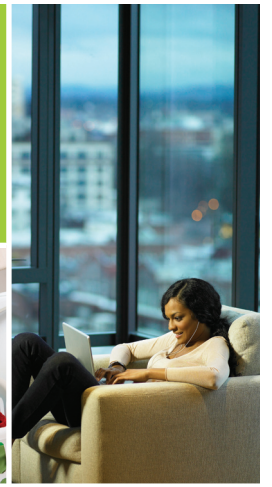
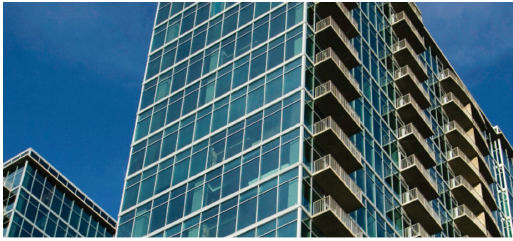
Direct-metered: Each unit is individually metered and billed directly by the utility at a residential rate. The building owner or condominium corporation receives a bill for all electricity usage in the common areas (e.g. hallways, elevators and lobbies). Smart Suite Metering is based on this system.

Master-metered: The utility supplies electricity to the building through a single (or in some cases a small number of) metering points. The building receives one electricity bill from Enersource Hydro Mississauga. Typically the owner apportions the total electricity charged to residents by a formula, not actual usage.



SMART SUITE

METERING PROGRAM



WHO PROVIDES THE ELECTRICITY TO A BUILDING WITH SMART SUITE METERING?

Enersource Hydro Mississauga continues to supply electricity to the building and provides billing, customer service and support for the Smart Suite Metering system.

WHERE DO YOU INSTALL THE METERS?

Meters are normally installed in:

- closets located every several floors;
- the basement of the building;
- or, in the case of garden-style housing, in a main utility closet.

In other cases, the most practical location for a meter may be inside the unit, close to the fuse box or circuit breaker panel.

HOW DOES ENERSOURCE'S METERING SYSTEM WORK?

A Smart Suite Meter is installed for each unit and measures the individual electricity use of that unit. There is a central data collector within the building (a transponder) which collects the metered data from all the individual meters. The metered data is communicated over the same electricity lines that provide electricity to the suite owner; therefore no additional wiring is required. The usage information is typically communicated from the transponder to Enersource Hydro Mississauga via a standard telephone line.

HOW ARE THE METERS READ?

The meters are most often read remotely from a computer using a modem.

FOR MORE INFORMATION PLEASE CONTACT:

Michael Gemin
Manager, Customer Relations
mgemin@enersource.com
905-283-4078

